

CERTIFICATE OF LOCATION OF GOVERNMENT CORNER

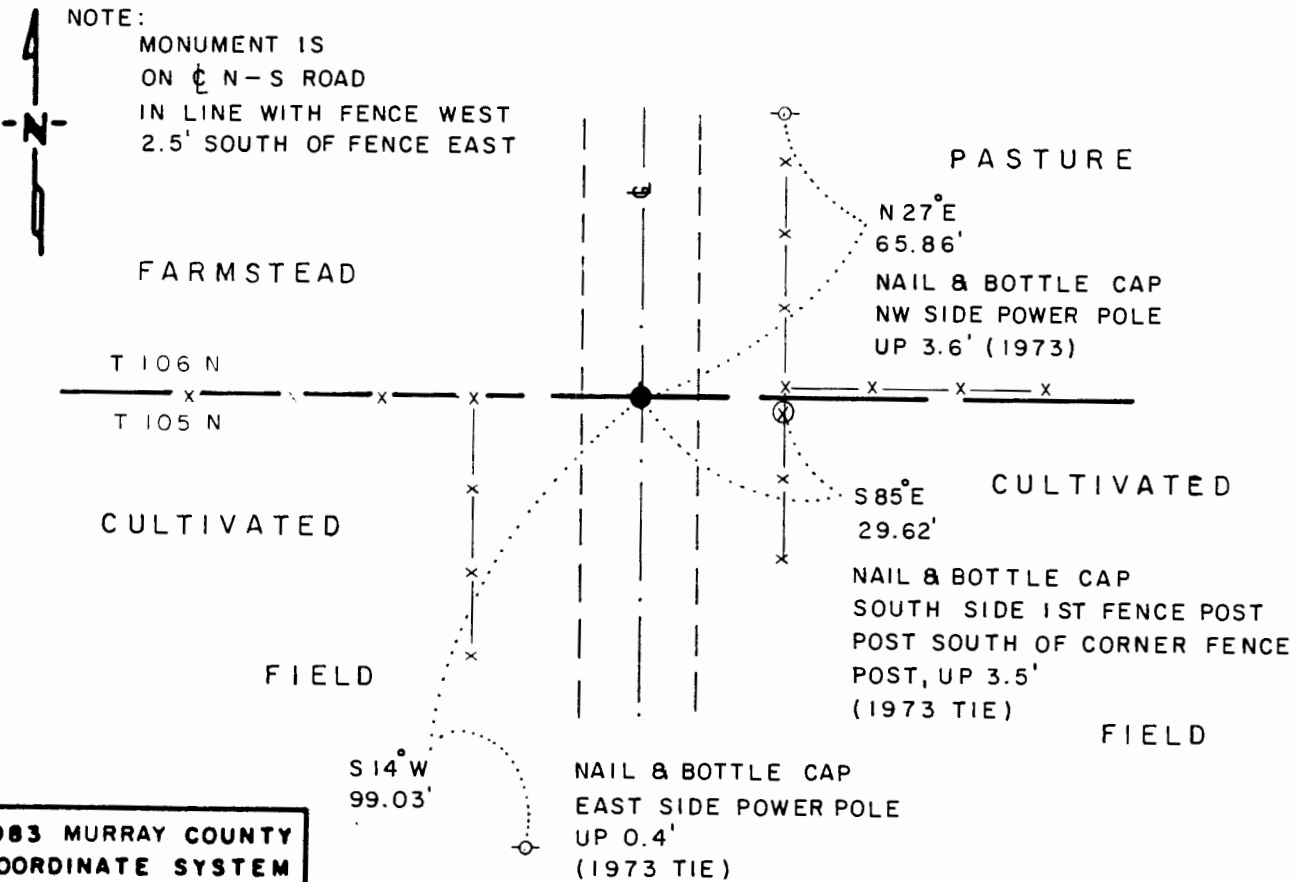
NORTHEAST Corner of Section 6, Township 105 N, Range 42 W, 5th P.M.

STATE OF MINNESOTA, County of MURRAY

At the corner location shown on the sketch

- On 7-24-91 found a 1/2" INSIDE DIAMETER IRON PIPE, DOWN 0.5'
DATE OVER FLAT STONE, DOWN 1.8'
 - left monument as found, lowered monument, removed monument (explain)
- On 7-24-91 placed a 1 1/4" x 1 1/4" x 20" PERFORATED STEEL TUBE WITH
DATE ALUMINUM CAP STAMPED "DNR SURVEY MARKER", DOWN 0.20' OVER STONE

SKETCH OF REFERENCE TIES



1983 MURRAY COUNTY
 COORDINATE SYSTEM
 N = 131,908.394
 E = 458,561.034

BEARINGS OBSERVED WITH COMPASS

Statement of evidence relative to this corner location is on back of page

J.B.M. 7-29-91
 WMA 12.00.00.01

I hereby certify that this document and the data contained herein was prepared by me or under my direct supervision.

Bruce W. Shopp
SIGNATURE

8-12-91
DATE

Registration No. 17003

- Land Surveyor, Professional Engineer
- County Surveyor, County Engineer

OFFICE OF THE COUNTY RECORDER

County of MURRAY

I hereby certify that this document was filed in the Co. Recorders office at _____ M. on the _____ day of AUG 15 1991 A.D., 19 _____

County Recorder James V. Johnson

By _____, Deputy

DOCUMENT NO. _____

Northeast Corner of Section 6, Township 105 North, Range 42 West

The DNR Bureau of Engineering contacted the following for survey information:

Mn Secretary of State's Office
Murray County Recorder's Office and Highway Engineer's Office
Mn/DOT Office in Willmar
Mn/DOT Office in St. Paul
Sioux Engineering of Windom
Sioux Engineering of Tyler
Madsen Land Surveying of Fairmont
Madsen Land Surveying of Worthington
Rieke Carroll Muller Associates of Gaylord

- 1861 U.S. General Land office notes obtained from the Secretary of State's Office show the corner marked with a post and deposited charcoal in a mound of earth and sod with trench and pits as per instructions.
- 1900 Surveyor's Record Book A, page 101, obtained from the County Recorder's Office contains a survey by J. W. Woolstencraft. This survey is also contained in a Surveyor's Record Book obtained from the County Highway Engineer's Office. Survey shows a stone in grade at corner but does not indicate if found or set. The corner is shown:
2640 feet from the north quarter corner of Section 6
- 1973 DNR Bureau of Engineering hired a backhoe to dig for evidence of corner. A large flat 1.5 foot rock was found down 1.8 feet. A 1 inch by 2 inch wood hub was also found down 0.1 of a foot, 0.4 of a foot north and 3.7 feet west of the stone. A railroad spike inside of an iron pipe and was set over the stone. The following ties were taken to the stone:
in line with fence west
2.5 feet south of fence east
on center line of north-south road
nail and bottle cap in power pole, northeast, 66.1 feet
nail and bottle cap in fence post, east-southeast, 29.8 feet
nail and bottle cap in power pole, southwest, 99.0 feet
nail and bottle cap in corner fence post, west, 36.0 feet
2616.91 feet from the north quarter corner of Section 6
2637.35 feet from the east quarter corner of Section 31
- 1979 DNR Bureau of Engineering found and used the railroad spike set over the stone in 1973.
- 1991 June, DNR Bureau of Engineering found a railroad spike inside of a 1/2" inside diameter iron pipe at corner. Searched for and found record ties as shown on sketch of reference ties. The railroad spike was found to be:
2616.90 feet from the north quarter corner of Section 6
2561.64 feet from the east quarter corner of Section 6
Discarded the railroad spike and iron pipe and replaced them with a DNR Survey Marker.

Analysis of the above information led the DNR Bureau of Engineering to conclude that the railroad spike and iron pipe which were set over a stone mark the location of the corner.